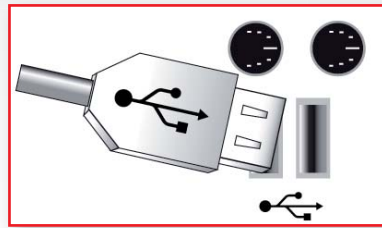


# HOW TO INSTALL LCR001



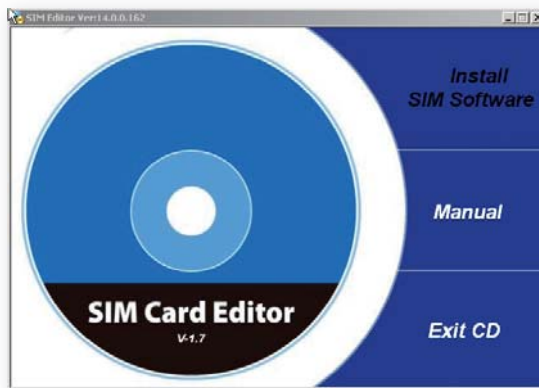
Thank you for choosing the LCR001 Logon card reader. Please follow the instructions step by step to install your card reader

# 1



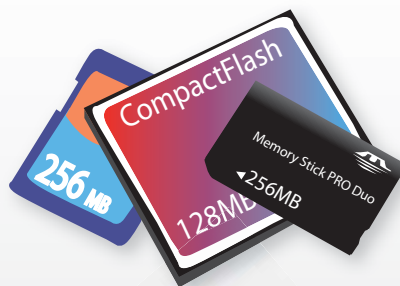
Insert your card reader in one of your personal computer USB port.

# 2



Insert the CD "Sim Card Editor" Click on "Install Sim Software" and follow the instructions.

# 3



The installation for USB card reader is done. You can now read all your digital cards

# 4



To read your ID card, go to [www.eid.belgium.be](http://www.eid.belgium.be), choose your Operating System (Win, Mac, Linux) and follow the instructions.

Now you are able to use the LCR001 Logon card reader.  
See all the Logon product on [www.log-on.be](http://www.log-on.be)